

March 2025 – Monkey King Answer Sheet

Welcome to Puzzled Pint!

Tonight

- We're here to help! This is not a competitive event. Ask the Game Control volunteers (GC) for hints as often as you'd like. The goal is to have fun, not to be frustrated!
- You can find complete information about this puzzle set online at: <http://puzzledpint.com>
 - Go to the location page there to find out if your location is running virtually and how to contact your local GC.
 - Look there for online remote solving tools for remote teams, like google-sheets and answer checkers.
- How did tonight go? Email us at Feedback@puzzledpint.com or fill out a brief survey at this QR code link →



The Puzzles

- Each puzzle's solution will be a short word or phrase. How do you find it? That's for you to discover!
- Need a code sheet or solving resources? Check out the Resources page on Puzzled Pint's webpage: <http://www.puzzledpint.com/resources/>
- You can use anything to help solve: Use your phone; the internet is fair game! Think your brother might have an insight? Give him a call!
- While each month has a theme, you need no special knowledge of the theme to solve.

About Puzzled Pint

- We're an all-volunteer organization.
- Help us run locally: Talk with Game Control about how you can volunteer.
- Help us run globally: <https://www.patreon.com/PuzzledPint>.



Artwork by @chartoonworks

Team Name:

Start Time:

Team Size:

End Time:

Puzzle Answers

| | |
|------------------------------------|---------|
| Location: The Magic Stone | BASHFUL |
| 1. The Crowning of the Monkey King | |
| 2. A Suitable Weapon | |
| 3. Magical Transformations | |
| 4. Havoc in Heaven | |
| Meta: The Challenge | |
| Bonus: Double Trouble | |



**Puzzled
Pint**
MAR
2025

1. THE CROWNING OF THE MONKEY KING



One day, *Sun Wukong* and his new monkey friends journeyed to the source of a stream where a powerful waterfall thundered down. The monkeys were all very curious about what was behind the waterfall, but none of them dared to venture to the other side. They declared that whoever was brave enough to go into the waterfall and strong enough to make it back out would become their new king.

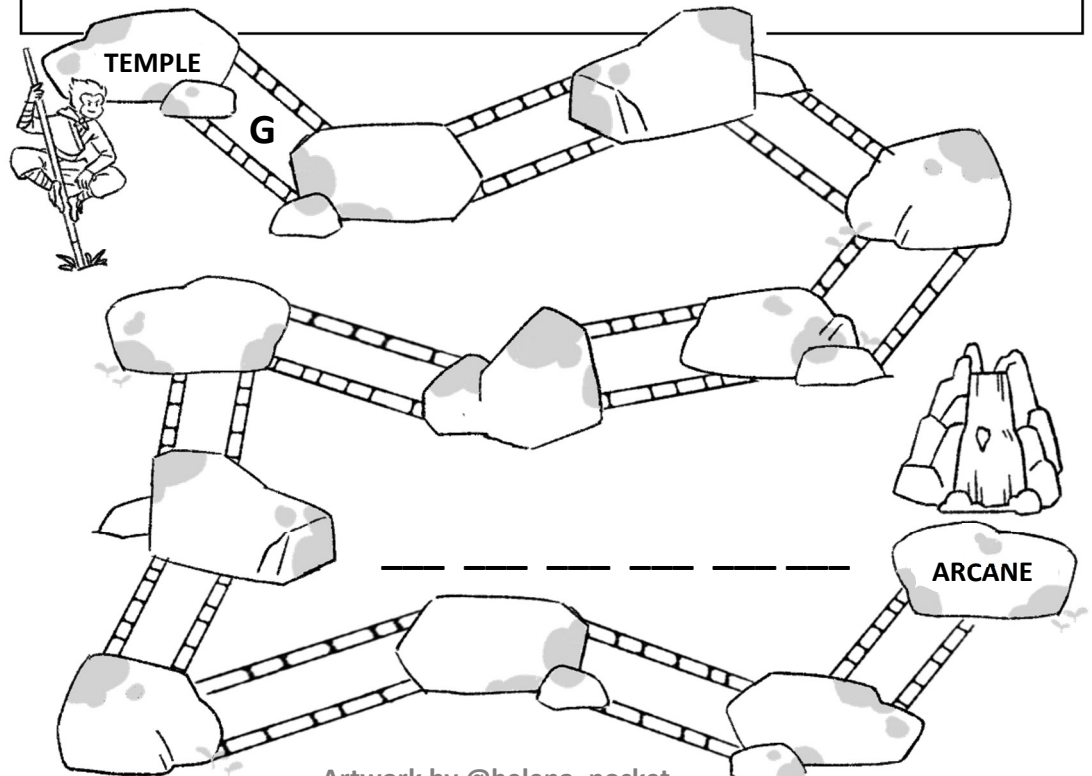
Help *Sun Wukong* **bridge** the gaps in the rocks so that he can cross the waterfall and claim the title of the Monkey King! **Oddly** enough, to make each bridge, *Sun Wukong* places a single character between two adjacent rocks.

Rocks

- Surprise attack
- Obscure
- ARCANE**
- PC's pointer
- Giver of fillings
- Put at risk
- I haven't the foggiest _____
- Tequila's country of origin
- It's often symbolized by a dove
- Fine white ceramic
- Place of worship
- TEMPLE**
- Dilutes paint
- Impossibly perfect

Bridges

- "Spirited Away" or "CardCaptor Sakura" TV artform originating in Japan
- Aromatic wood often used for chests
- Be in agreement, see eye-to-eye
- A planet that's a pale blue dot
- Slowly wear away
- Enter data into a computer
- Crotch to cuff
- Key for a map **LEGEND**
- A circle or a square, e.g.
- Morally wrong or shocking
- Mental daze, often used to describe a drunken state



Artwork by @helena_pocket

© 2025 CC BY-NC-SA Intl. 4.0 Stephanie Yang (Boston, MA)

2. A SUITABLE WEAPON



For many years, *Sun Wukong* and his friends lived peacefully on Flower Fruit Mountain. One day, tired of his everyday life, Sun Wukong found a powerful sage who taught him how to use magic. Once he had gained many new powers, he decided he also needed a weapon. Brash and arrogant, he traveled to the palace of the Eastern Dragon King and demanded the Dragon King's finest arms and armor.

To make a **long** story **short**, *Sun Wukong* finally decided on the *Ruyi Jingu Bang*, an enormous pillar that controls the ebb and flow of the tides. *Sun Wukong* used his magic to shrink the pillar down. It **got progressively smaller** until it was the size of a needle, making it easier to carry around.

Help *Sun Wukong* shrink some more objects to discover a magical attribute he gained while studying with the sage!

Their country's football team came up just one goal short of winning the last World _____

One of Snow White's seven short companions

To describe people who get along, one might say: birds of a _____ flock together

_____ -longs are a classic Subway offering

James and the _____ Peach is a short children's book

Longtime pop star Ariana

What many a prince longs to become one day

If dating someone is a long shot, they're probably out of your _____

A _____ year is a scientist's short way of saying 9.5×10^{15} meters

Frodo's journey through _____ Earth did not take any shortcuts

Measurement that's shorter on land than at sea

Blood is pumped along its way at a rate measured in beats per _____

Long-running Puzzled event that you are participating in

Title for any of Henry VIII's wives, though many had short tenures

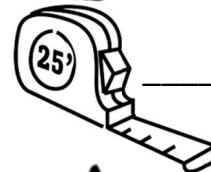
Place for those that fall just short of winning

Opposite of short

The distance between Minneapolis and St. Paul is so short, they are often called the _____ Cities

Twenty, in a country shaped like a long boot

Place to host a sale of one's belongings

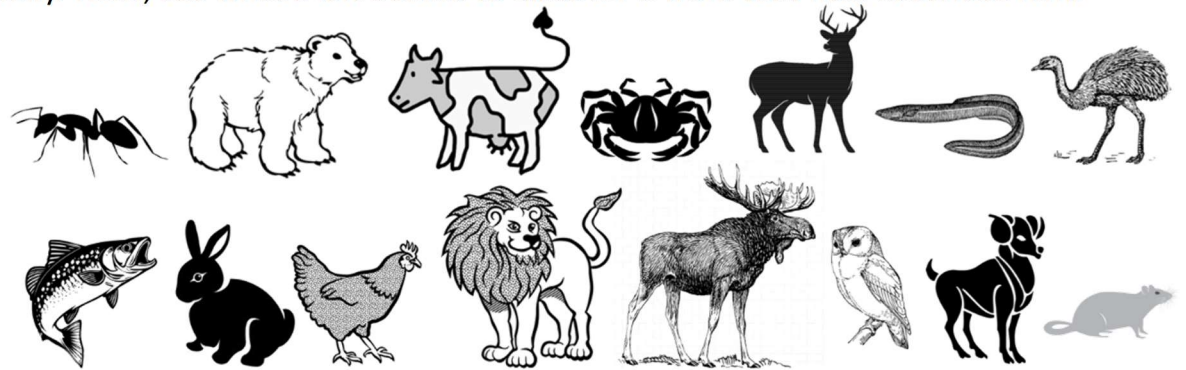


3. MAGICAL TRANSFORMATIONS



Sun Wukong gained many other powers after studying with the sage. One of them was the ability to transform into all sorts of animals and objects! As he grew more powerful, he became more arrogant and self-important. Find all the hidden versions of *Sun Wukong*, keeping in mind that he cannot hide diagonally. Then, see what's left behind to discover a word that now describes him.

1. Ambitious desire, or removal of fluid
2. Goatees, e.g.
3. Alley game
4. To take by force
5. Fearful sort
6. Thighbone
7. Where meals are prepared
8. Exhibition building at the World's Fair
9. Spooky "Music of the Night" figure
10. Where a pharaoh is buried
11. Classic board game with letter tiles
12. Not willing to share
13. Social media action
14. Depart quickly
15. Circular object that needs no reinventing



| | | | | | | | | | | | |
|---|---|---|---|---|---|---|---|---|---|---|---|
| R | A | R | Y | P | N | T | O | L | B | S | H |
| B | M | E | A | D | A | L | M | E | B | I | E |
| O | I | D | F | P | H | T | T | E | A | F | S |
| W | L | I | E | M | U | R | S | C | R | L | E |
| R | G | N | I | O | N | S | O | O | M | A | V |
| S | P | A | L | C | A | E | D | T | A | S | P |
| C | H | V | I | O | W | A | R | T | A | R | I |
| T | E | S | T | U | W | H | R | I | O | N | N |
| I | N | H | A | R | E | E | E | L | B | E | A |
| K | S | I | O | M | M | A | N | N | A | N | R |
| I | M | A | C | R | E | E | D | L | S | S | D |

4. HAVOC IN HEAVEN



Sun Wukong's arrogance grew more and more, until one day, he demanded to be included in the heavenly court. The Jade Emperor agreed, appeasing him with an empty title – “Guardian of the Immortal Peach Orchard”.

One day, a group of celestial maidens went to the orchard to collect peaches for an Imperial banquet. Furious that he had not been invited, *Sun Wukong* used his magic powers to put them to sleep. On top of that, as revenge, he ate every single peach in the orchard!

The peaches in the heavenly orchard are special, conferring immortality on whomever eats them. There are **three types**, and they take either 3,000, 6,000, or 9,000 years to bloom. Figure out what peaches are in each of the three different groves of the orchard to find out which soldiers went after *Sun Wukong*!

| | | | |
|----|--|----|----|
| | | | 18 |
| | | 6 | 12 |
| | | | 15 |
| 18 | | 15 | 12 |



3,000-year peach: 13 total



6,000-year peach: 9 total



9,000-year peach: 5 total

| | | | |
|----|--|----|----|
| 9 | | | 18 |
| | | | 21 |
| | | | 12 |
| 15 | | 21 | |

The numbers on the outside of each grove denote the total thousands of years that it took for the peaches in that row/column/diagonal to bloom.

| | | | |
|----|---|----|----|
| | | | 15 |
| | 3 | | |
| | | | 9 |
| 18 | | 12 | |



Artwork by Tyler Yang



Puzzled
Pint
MAR
2025



THE CHALLENGE



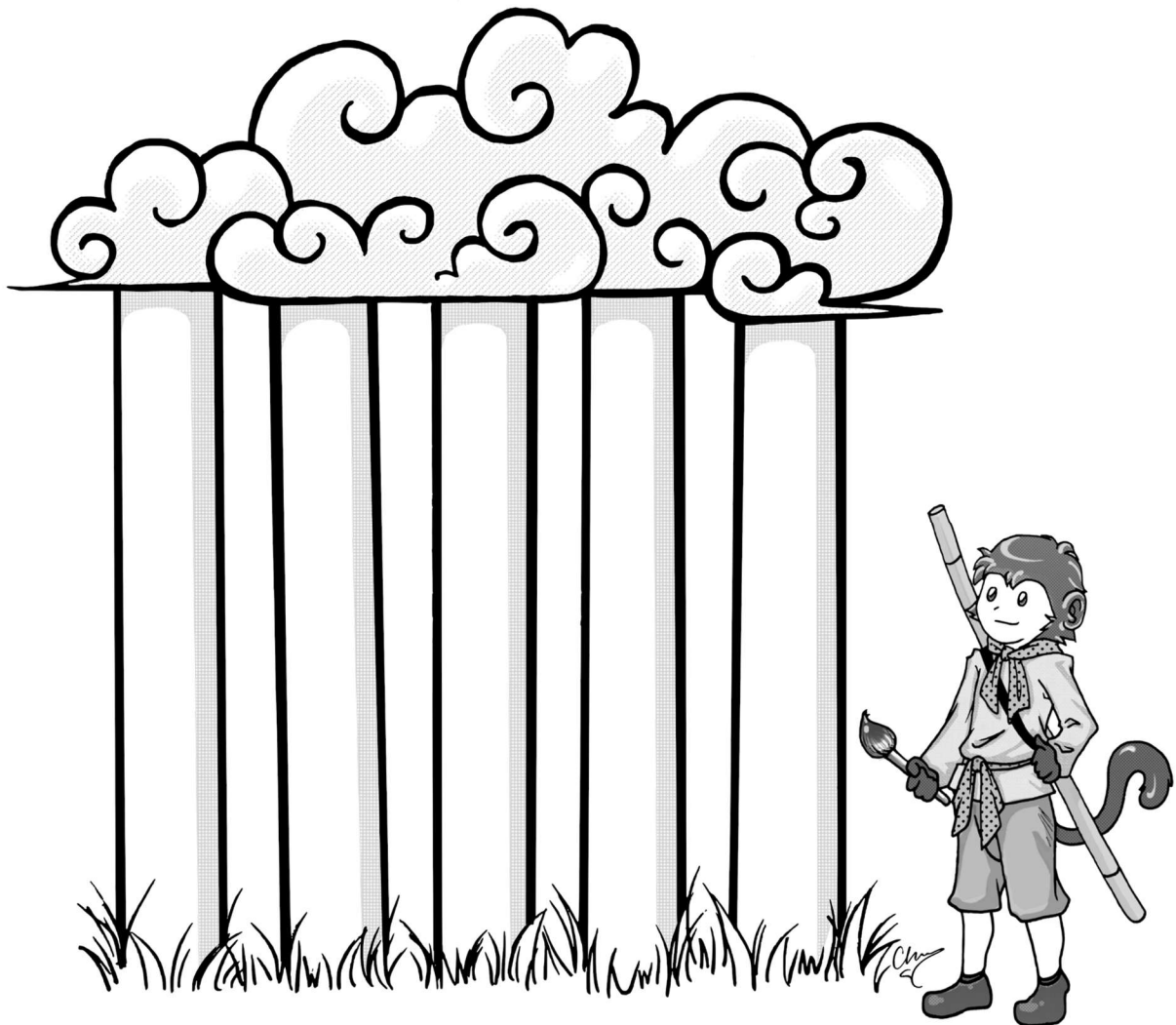
After *Sun Wukong* ruined the celestial banquet, the emperor sent many soldiers to apprehend him. However, they were all soundly defeated. Tired of *Sun Wukong*'s shenanigans, the Jade Emperor decided to appeal to a higher power for help – the Buddha.

When the Buddha arrived, he picked up *Sun Wukong* with one enormous hand and issued a challenge: if *Sun Wukong* could escape his palm, then he could have the Jade Emperor's position. If not, he would face imprisonment.

Sun Wukong laughed uproariously. Accepting the challenge, he bolted, traversing millions of miles in an instant. He quickly reached the end of the universe, where he saw some giant pillars.

First, to prove that he had made it to the edge of world, he scribbled **letter by letter** descriptions of all his past exploits, from his birth out of the magic stone to his exploits in the immortal peach orchard. When he was finally done, he took one **last** glance at the pillars.

When *Sun Wukong* returned to where he started, what did he discover about the pillars?



Artwork by @chartoonworks

© 2025 CC BY-NC-SA Intl. 4.0 Stephanie Yang (Boston, MA)



Help *Sun Wukong* **look** for his clones to find a phrase that he said to them!

[illegible]