



# July 2025 1ST ANNIVERSARY Answer Sheet



Try out the new  
Interactive Code  
Sheet!

Welcome to Puzzled Pint!

## Tonight

- We're here to help! This is not a competitive event. Ask the Game Control volunteers (GC) for hints as often as you'd like. The goal is to have fun, not to be frustrated!

## The Puzzles

- Each puzzle's solution is a short name or phrase. How do you find it? That's for you to discover!
- Need a code sheet or solving resources? Check out the Resources page on the Puzzled Pint website or scan the QR code at the top right.
- You can use anything to help solve: Use your phone: the internet is fair game! Think your brother might have an insight? Give him a call!
- While each month has a theme, you need no special knowledge of the theme to solve the puzzles.

## About Puzzled Pint

- We're an all-volunteer organization. Talk with GC about volunteering to help us run locally, or help us run globally.

Donate and get an  
additional themed  
puzzle each month:



Become a GC and/or  
write a puzzle set  
for a future month:



Team Name:

Start Time:

Team Size:

End Time:

Puzzle Answers	
Sliding Tiles	
Revolutions	
Unleash Your Solving Potential	
Party Time	
Checkpoint! Have GC verify your answers to receive the Meta and Bonus puzzles.	
Meta: A Toast	
Bonus: 15 Candles	

How did tonight go? Email [feedback@puzzledpint.com](mailto:feedback@puzzledpint.com).

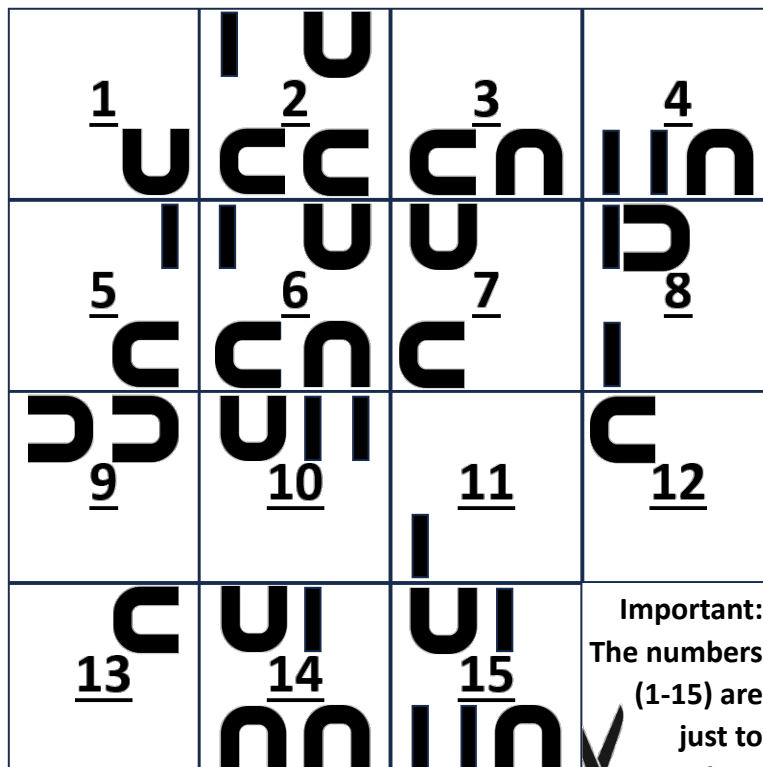


# I. Sliding Tiles

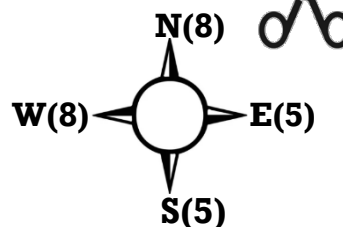


Ah yes, the classic 15 puzzle.\* Focusing on 15 tiles at once might be a bit much. Some find it easier to focus instead on the one empty space. Below are 26 clues for 26 moves. The answers may vary in length, but the total number of letters in each group is equal to the total of every other group. Two have been filled in for you. In the **middle of all these answers**, you will hopefully find the **directions** – **holistically**, of course – to the solution.

\*“15-puzzles” date back to 1874. The objective is to unscramble 15 tiles by sliding them one at a time back and forth, up and down within a rigid square frame.



**Important:**  
The numbers (1-15) are just to make it easy to reset the cut-out puzzle!



If you would rather try an online version of this 15-puzzle, use this QR code:



- Insect – not your dad’s sister  
**ANT**
- Square cakey chocolate treat
- Packages of 24 – as in beers – or criminal investigations

- Acronym/initialism for Driving While Impaired
- Finale
- “Far-between” companion
- Wildebeest
- Folded-over and stitched edge

- Irregularities, things that deviate from the pattern – perhaps in a suspect’s story

- Precious gem or stone
- A \_\_\_\_\_ wings are too small to allow it to fly
- Narnia author

- Soaked in a flavorful liquid
- Fresh and unused
- Loneliest number

- Medications, or the large companies that manufacture them

- Chivalrous mission
- It’s rubbed on bows

- Underground conduit for waste water – or tailor

- Rexes of the Dinosaur Age

- Employ or manipulate
- There’s at least one in every English word – usually
- Unintentional crease in a cloth or brow

- One of the heavier noble gases
- Indications of boredom or lack of sleep

- Designated areas, for example where parking is forbidden

**ZONES**



## 2. Revolutions



Once every 15 years the planets in the distant **Omicron** solar system perfectly align in your window. At **night** you use your telescope to zoom in to each window frame, revealing certain planets **illuminated** by their sun, **Omicron**, which is **always freely visible** in your window. You brainstorm a few ideas for what each configuration looks like. When you zoom out and refocus to the whole window, a new pattern emerges.

### Zoomed In

**Primary artery = Five suit deck = Palindromic shoulder cuff**

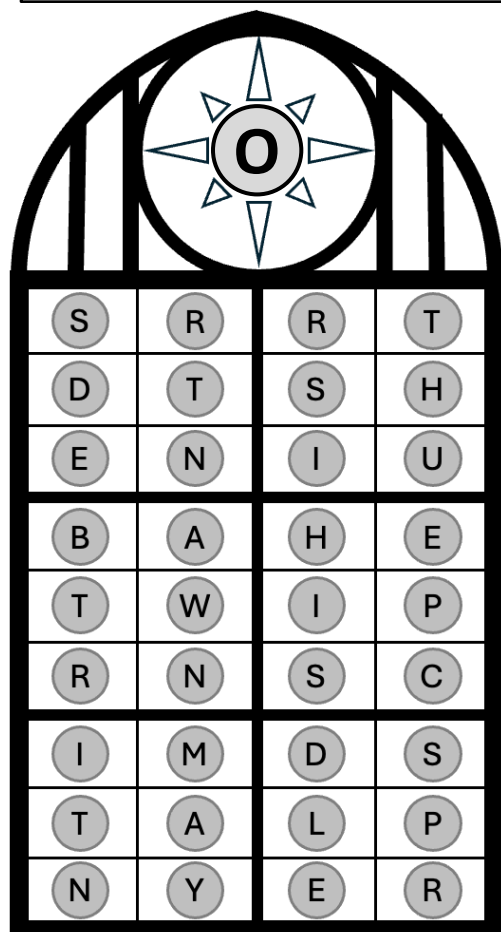
**Circular band = Small jump = e.g. Winnie**

**Deficit or casualty = Scandinavian capital = Arias or red cups**

**Scientific or musical \_\_\_\_ = Country or tribe = Rite of passage for group entry**

**Semi-aquatic mammals = Renovates or returns to original condition = Nightmares**

**Public disturbances of the peace = Rice dish = Stooges and Musketeers**



### Zoomed Out

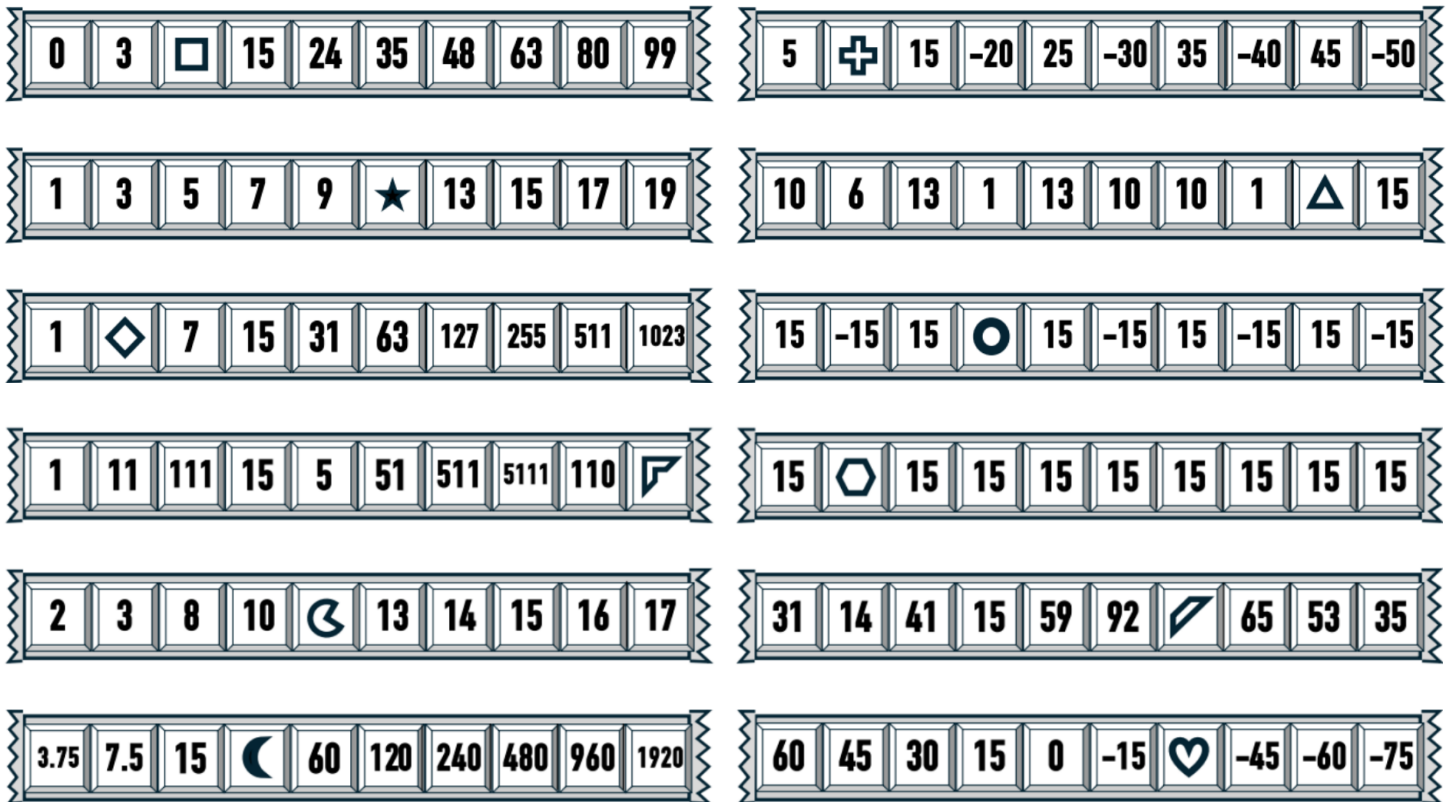
1. Latte or Cortado ingredient (8)
2. Curtain or Age (4)
3. Fluorescent sign contents (4)
4. Notorious first century emperor (4)
5. Dark film genre (4)
6. Foolish behavior or whimsical language (8)
7. Midday (4)
8. Negative response or Jordan Peele film (4)
9. Starting pitcher or device to unseal a can (6)
10. Bursts a balloon (4)
11. Likely to suffer from or facing downward (5)
12. Items an actor carries (5)
13. Positive column in a decision-making list (4)
14. Reclaim after defaults on payments (9)
15. Device to detect motion or pressure (6)
16. Earlier (6)
17. Supporter or benefactor (7)

14 16 10 17 13 7 15 4 2 9 8 1 6 3 12 5 11

# 3. Unleash Your Solving Potential (1/2)



Dr. Puzz has been busy promoting his new PuzzlTein™ Bars that claim to improve solving abilities. You're skeptical: puzzle-enhancement supplement bars? What's next—hint mints?! He offers to show you the results of his research as proof. "While experimenting with optimal PuzzlTein intake sequencing per bar, the reviews from testers (next page) correlated exactly as expected!" Dr. Puzz still seems a little **shifty**, but you agree take a look yourself. Each bar was consumed left to right, with the PuzzlTein strengths per square indicated, but some of the data appear to be missing.



### 3. Unleash Your Solving Potential (2/2)



"Amazing at first but just got worse and worse. Ended up distracting my team more than helping." -Sarah **X**.

"At the **start of each month** I look forward to the upcoming Puzzled Pint. This will help **spell** more success for our team!" -Liam **Z**.

"Constant benefit from start to finish." -Fatima **M**.

"Did better than expected on some puzzles, worse than expected on others. Overall didn't seem to make much of a difference at all." -Michael **T**.

"I can usually only focus on one puzzle at a time, but tonight I was consistently able to double up!" -Mia **I**.

"I couldn't get over how odd it tasted." -Jade **C**.

"It bothered me that each piece was almost (but not quite) perfectly square." -Yusuf **J**.

"It definitely helped, but to seemingly random extents. Tasted vaguely like pie." -Sofia **O**.

"It was almost two powerful!" -James **B**.

"My teammate and I shared the bar but had very divergent experiences. She did increasingly better and better over time while I just did worse and worse. Total scam." -Ursula **K**.

"Terrific treat! Entirely tolerable texture. Intensely terrible taste though." -Ayesha **V**.

"WOW! Maybe Rome could have been built in a day if they had had these bars." -Hana **W**.



# 4. Party Time

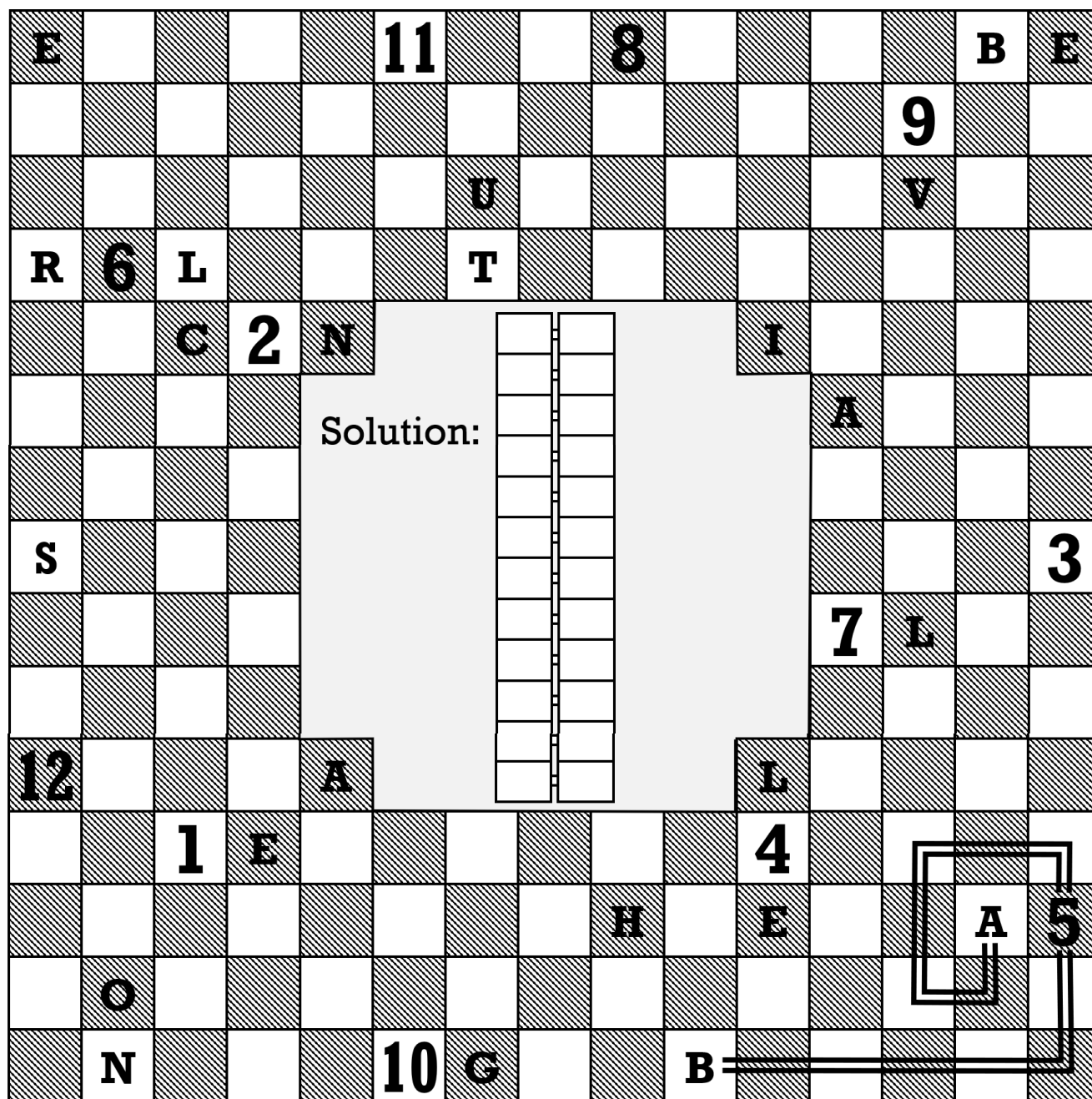


WOO HOO! Everyone cheers as a dozen party streamers shoot up into the air. The streamers land around the perimeter of the room – none on the central dance area. And their pattern on the floor is quite puzzling:



- 1) The streamers have only right-angle bends in them.
- 2) No streamer crosses itself or another streamer.
- 3) Every square tile has one and only one streamer covering it.
- 4) Every streamer covers fifteen tiles and has a letter at one end, a letter at the other end and a number in the exact middle. The number indicates how many bends occur in the streamer.

The B-5-A streamer has been filled in for you as an example.







# 15 Candles



To celebrate Puzzled Pint's 15th birthday, you bake a cake for each team at your local chapter– for both the regulars and those that attend **off and on**. As an extra special surprise, you decorate the cakes with a combination of regular candles (that are easily blown out) and trick candles (that cannot be blown out) so that a special pattern will emerge when you look around the pub afterward. For each team, you devise a customized **coding** scheme to label the candles and help you remember which are the trick candles.

