



# Puzzled int January 2025

SOLUTION



## Mary Had a Little Lamb

It followed her to school one day,  
First to class, then to play.  
It followed as she led the way,  
As happy as a clam.

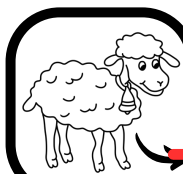
When Mary off to lunch was sent,  
It went too, so content  
To go wherever Mary went.  
And what went with the lamb?

M I N T S A U C E

© 2025 CC BY-NC-SA Intl. 4.0  
Max Chemtov (Montreal, QC, CA)



Mary knows her way around the school and took the **most direct route possible**. However, she is not an ambi-turner, and can **only ever go straight ahead or turn right**. Help the lamb follow Mary's path.



	N	O	W	T	H	I	S		M	E
A	N		S	W	E	A	R	E	M	
	A	R				K	I	N		
G	M	A	R	Y	S	L			N	
E			T	I	S		A	L	O	
N		G		W	I	N	D	I	N	
G		W	A	Y		U	S		E	
L	O	G	I	C	T	O	R		E	
C	O			N			S	T	R	
	U	C	T	R	O	U	T	E		





**Puzzled**  
**int** January 2025  
**SOLUTION**

*There Was an Old Lady  
 Who Swallowed a Fly*

There was an old lady who swallowed a fly.  
 I don't know why she swallowed a fly.  
 Perhaps she'll die.

The fly set the mood to continue her feast  
 (That's what I'm told by her neighbours at least.)  
 She swallowed the spider to catch the fly, but  
 Why, oh why, did she swallow a fly?

**P R E D I L E C T I O N**

© 2025 CC BY-NC-SA Intl. 4.0  
 Max Chemtov (Montreal, QC, CA)



- Many-footed creature
- Butter alternative
- What's heard on roller coasters
- Disruptive behaviour
- Like all of these answers
- Border between land and sea
- Fallen space rock
- More prone to nervous spasms
- Camera lens openings
- Like the most clever of puzzle solvers
- Speared a whale
- Add just a dash?

**M I L L I P E D E**  
**M A R G A R I N E**  
**S C R E A M I N G**  
**R O W D I N E S S**  
**C O M P O S I T E**  
**C O A S T L I N E**  
**M E T E O R I T E**  
**T W I T C H I E R**  
**A P E R T U R E S**  
**B R A I N I E S T**  
**H A R P O O N E D**  
**H Y P H E N A T E**



AGAR ARES ASTI BEST COME CONE CRAM HARD  
 HEAT HYPE ~~LIED~~ METE ~~MILE~~ MINE PERU PONE  
 POST RANI ROSS SING TIER TORI WINE WITH

**Puzzled  
int** January 2025  
**SOLUTION**

## London Bridge is Falling Down

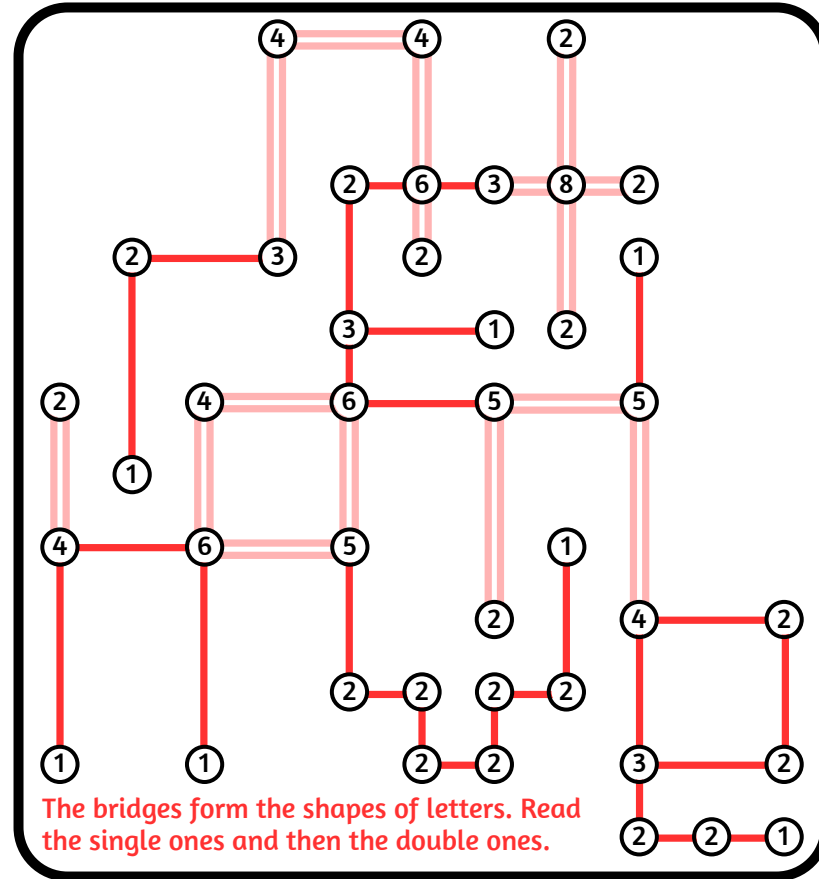
All these bridges, falling down,  
Falling down, falling down,  
Divided up our island town,  
My fair lady.

We needn't panic, lucky us,  
Lucky us, lucky us.  
We've tools to fix each arch and truss,  
My fair lady.

Folks will, once we link the isles,  
Link the isles, link the isles,  
Come back home With grateful smiles,  
My fair lady.

## REINVENTION

© 2025 CC BY-NC-SA Intl. 4.0  
Max Chemtov (Montreal, QC, CA)



The bridges form the shapes of letters. Read the single ones and then the double ones.

Connect all the circular islands with horizontal and vertical bridges so that:

- All islands are linked into a single connected group.
- The numbers show how many bridges meet at each island.
- No bridge crosses an island or another bridge.
- At most two bridges connect any pair of islands.

Construction will happen in two stages: first all the single bridges, then all the double ones. Once it's all done, what will have been achieved?



**Puzzled  
int** January 2025  
**SOLUTION**

**The Itsy Bitsy Spider**

The itsy bitsy spider went up, down, left and right  
All through this spout while trying to catch a bite.  
Searching for bugs ere rain began to fall,  
Where was it able, at last, to find them all?

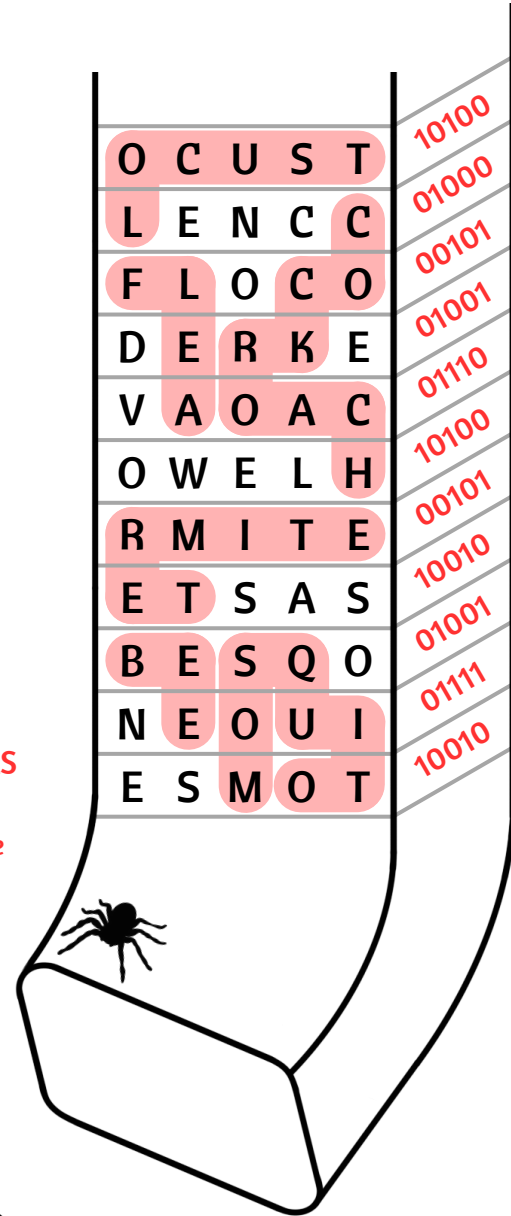
**T H E I N T E R I O R**

© 2025 CC BY-NC-SA Intl. 4.0  
Max Chemtov (Montreal, QC, CA)



- (3) **BEE**
- (9) **COCKROACH**
- (4) **FLEA**
- (6) **LOCUST**
- (8) **MOSQUITO**
- (7) **TERMITE**

Leftover letters spell  
"ENCODE VOWELS  
AS ONES,"  
a clue to interpret the  
rows as binary.



**T  
H  
E  
I  
N  
T  
E  
R  
I  
O  
R**



**Puzzled  
int** January  
2025  
**SOLUTION**

## Twinkle, Twinkle, Little Star

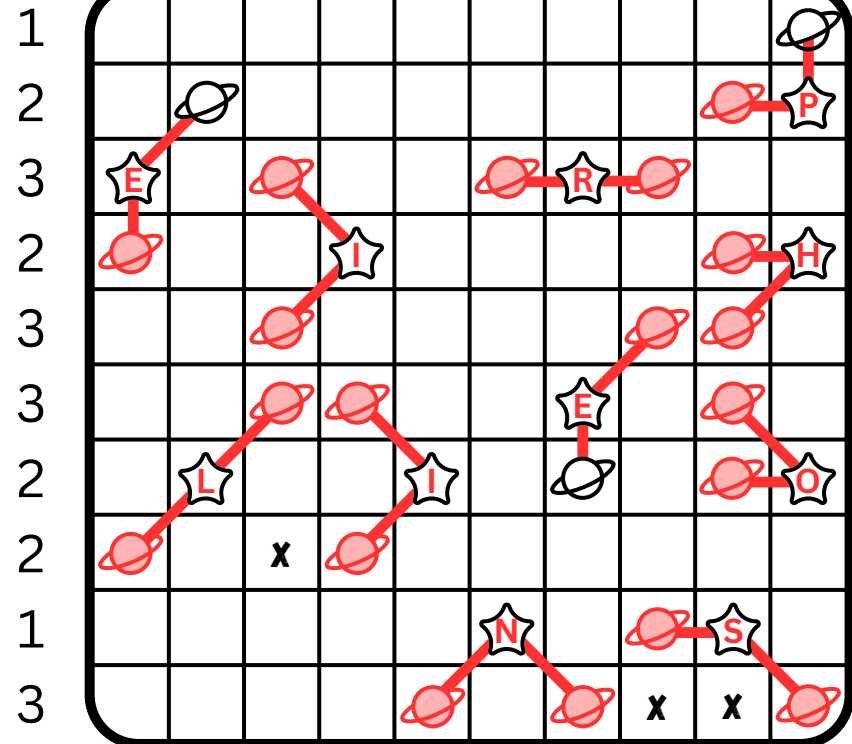
Twinkle, twinkle, little star,  
Tell me where your planets are.  
Seems like cosmic luck, it's true,  
Each star has exactly two.  
Find our neighbours way up high,  
Where should we now cast an eye?

**P E R I H E L I O N S**

© 2025 CC BY-NC-SA Intl. 4.0  
Max Chemtov (Montreal, QC, CA)



2 1 3 2 1 1 2 3 5 2



Place planets in the grid so that:

- Each star has exactly 2 planets next to it (including diagonally).
- Each planet is next to exactly 1 star.
- The number of planets in each row and column match the numbers outside of the grid.

Some planets and empty spaces have been given to get you started. When you find the others, you can flag the systems in your star chart.  
**Each system represents a letter in semaphore.**

**Puzzled  
int** January 2025  
**SOLUTION**

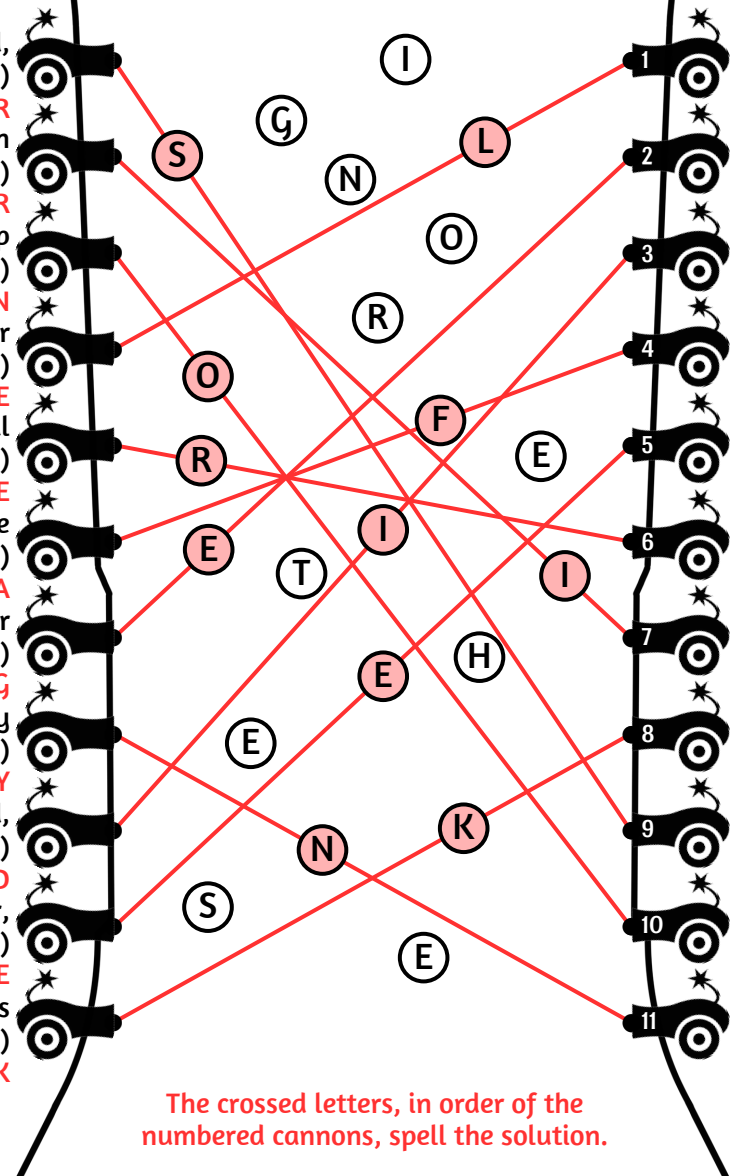
**Row, Row, Row Your Boat**  
(to be sung in cannon)

Row, row, row your boat.  
Pirates taking aim!  
When this Ship comes under fire,  
Call the captain's name!

**L E I F E R I K S O N**

© 2025 CC BY-NC-SA Intl. 4.0  
Max Chemtov (Montreal, QC, CA)

- Like cocoa, cold, or the end (6)  
**BITTER**
- Hamilton duelist (4)  
**BURR**
- Stand-up person (8)  
**COMEDIAN**
- No longer here (4)  
**GONE**
- Deceitful cunning (5)  
**GUILE**
- Japanese writing (4)  
**KANA**
- One of four in a deck (4)  
**KING**
- Groundhog Day actor Bill (6)  
**MURRAY**
- Voided, zeroed out (6)  
**NULLED**
- Elicit laughter, perhaps (6)  
**TICKLE**
- Miley Cyrus dance move (5)  
**TWERK**



- One of the noble gases  
**ARGON**
- Following a curved trajectory  
**ARCING**
- Palmer or Schwarzenegger  
**ARNOLD**
- Mysteries known only to few  
**ARCANA**
- News item  
**ARTICLE**
- Diamond pattern on some socks  
**ARGYLE**
- Vine-covered shelter  
**ARBOR**
- Paintings and sculptures, etc.  
**ARTWORK**
- Judge or referee  
**ARBITER**
- Relating to an ancient Greek mathematician  
**ARCHIMEDEAN**
- Weapon store  
**ARMORY**

The crossed letters, in order of the numbered cannons, spell the solution.



# Old MacDonald Had a Farm

Old MacDonald had a farm,  
E-I-E-I-O!  
And on that farm he had a ...

Wait, there are no animals here?  
I'm sure I heard **some in the earlier puzzles.**  
The next time Old MacDonald is at the market,  
what should he invest in?

**L I V E S T O C K**

© 2025 CC BY-NC-SA Intl. 4.0  
Max Chemtov (Montreal, QC, CA)



P	E	R	I	H	E	L	I	O	N	S				
				T	H	E	I	N	T	E	R	I	O	R
		R	E	I	N	V	E	N	T	I	O	N		
			P	R	E	D	I	L	E	C	T	I	O	N
		L	E	I	F	E	R	I	K	S	O	N		

Each answer contains E-I-E-I-O, which can be aligned with the highlighted boxes in one of the rows.

Each previous puzzle has one to two animal sounds in a different font in its flavour text. For example:

The fly set the mood to continue the feast.

The boxes corresponding to the animals in each puzzle give the solution reading downward.





# Puzzled int

January  
2025

SOLUTION

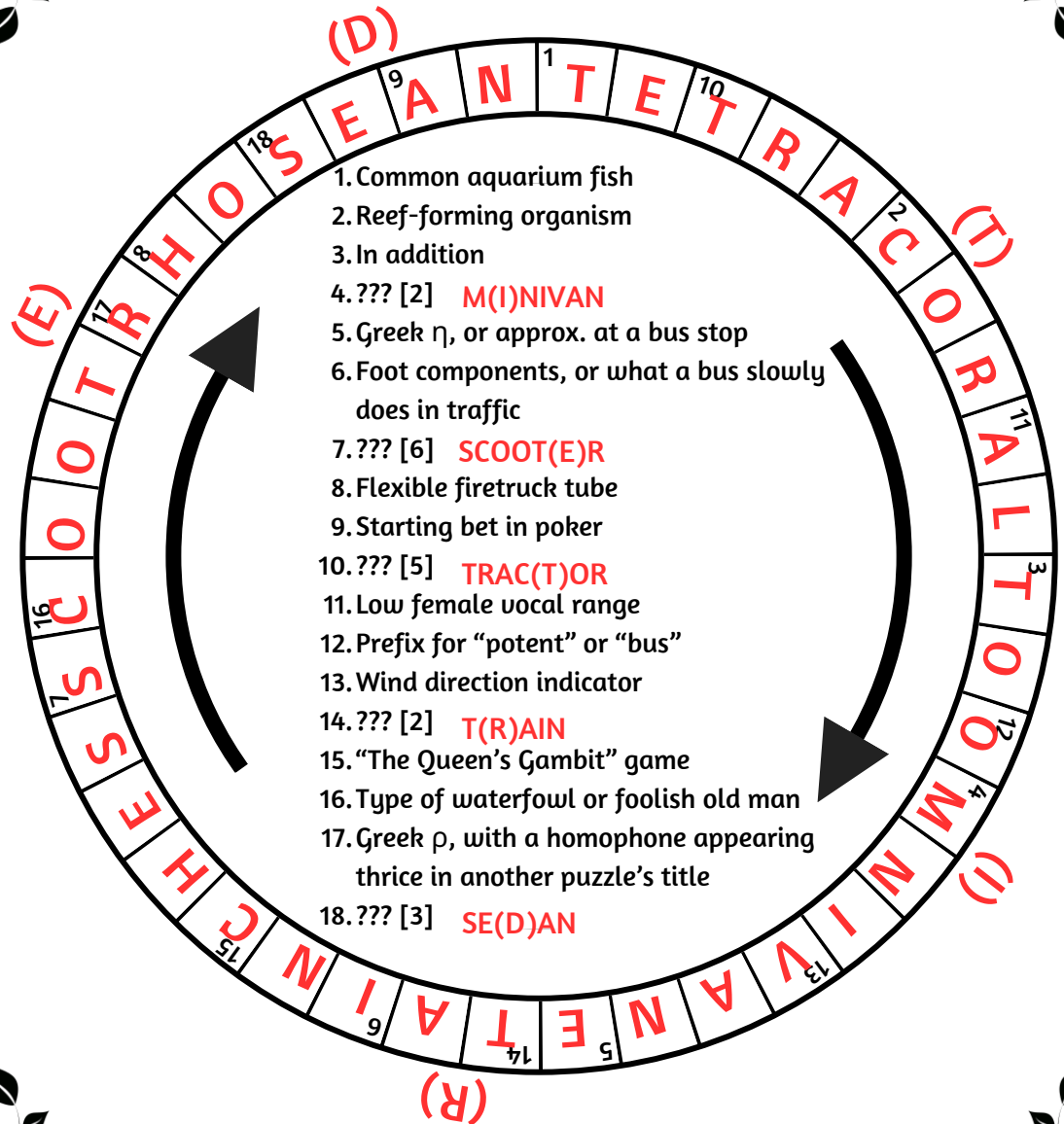


## The Wheels on the Bus

The wheels on the bus go round and round,  
Round and round, round and round.  
How do they feel, covering all that ground  
All through the town?

T I R E D

© 2025 CC BY-NC-SA Intl. 4.0  
Max Chemtov (Montreal, QC, CA)



1. Common aquarium fish
2. Reef-forming organism
3. In addition
4. ??? [2] **M(I)NIVAN**
5. Greek η, or approx. at a bus stop
6. Foot components, or what a bus slowly does in traffic
7. ??? [6] **SCOOT(E)R**
8. Flexible firetruck tube
9. Starting bet in poker
10. ??? [5] **TRAC(T)OR**
11. Low female vocal range
12. Prefix for "potent" or "bus"
13. Wind direction indicator
14. ??? [2] **T(R)AIN**
15. "The Queen's Gambit" game
16. Type of waterfowl or foolish old man
17. Greek ρ, with a homophone appearing thrice in another puzzle's title
18. ??? [3] **SE(D)AN**

Each ??? answer is a wheeled vehicle with one letter missing at the indicated spot. These missing letters spell the solution in wheel order.