



Puzzled Pint

December 2020

A Lusterless Light

© 2020 CC BY-NC-SA Intl. 4.0 Jimmy Chang (Los Angeles, CA/USA)

There's a hubbub in Whoville - something's amiss:

No festive feelings, no holiday bliss

Can be felt in the air. All is dour and bleak,

A thief of joy is at large as we speak!

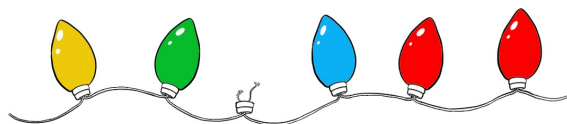
The Whos need your help, that much is clear.

Find out what happened to their Christmas cheer!

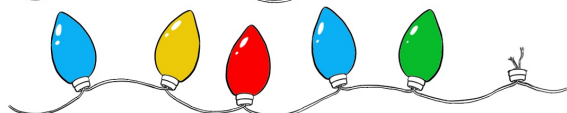
Below are some Christmas light displays, though what they currently depict is different from what was intended. Maybe someone took some of the bulbs?

What It Looks Like

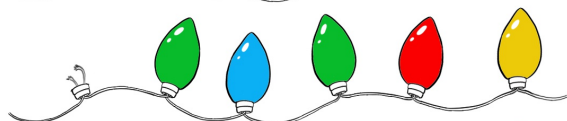
Sensible shoes



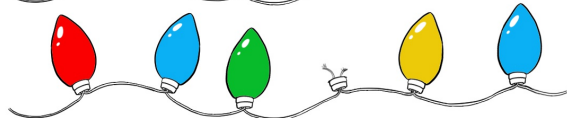
A mathematical proportion



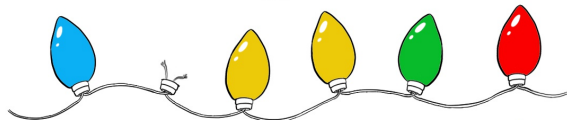
A rundown shack



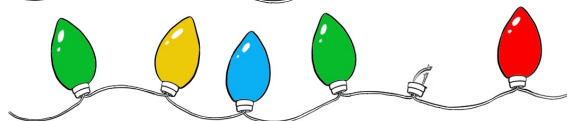
An orangish-yellow color



Wise men



A leafy lifeform



What It Should Be

Parade displays

A soldier's meal

A gardening tool

A slow walker

Performance platforms

A heavenly body