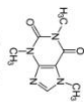




Puzzled



May 2019



CHEMISTRY CLASS



Solve each elemental clue, then apply that pattern, symbolically of course. Then use those thirteen solutions to form a meta-clue. If you can then solve the meta-clue, J-C-style, well that would be brilliant. To help you out, the list of 118 has been reduced to just fifteen to choose from!

sodium
einsteinium

VRSNCTHHNDNBRCDDSSTRBIMP SHVBNFLDVTHTHSGS → $\frac{\quad}{10}$

silicon

COMPUTTECHIPRELOTHISEMICONDUCTINMETALLOI → $\frac{\quad}{5}$

hydrogen

lead

INBRIDGUESHUEMOGLOBINANDTHUEUEARTHSCORUE → $\frac{9}{4} \frac{\quad}{1}$

iron

titanium

SEINNEPSU28'-T SOPEDISNIGNILLIFLATEMPAEHC → $\frac{2}{13}$

ununtrium

zinc

DEAVYDETALDNCEDSEDDNDAINTSDDASOLINE → $\frac{12}{11}$

helium

mendelevium

ELTWENLLEORINCANDESCENLITGHIBNTB2 → $\frac{\quad}{8}$

boron

arsenic

PREVIOJSJPPACNAMEFORNIHONIJM → $\frac{3}{6} \frac{\quad}{7}$

tungsten

mercury

1 ____ 2 ____ 3 ____ 4 ____ 5 ____ 6 ____ 7 ____ 8 ____ 9 ____ 10 ____ 11 ____ 12 ____ 13 ____ →

--	--