

Music Tip Sheet

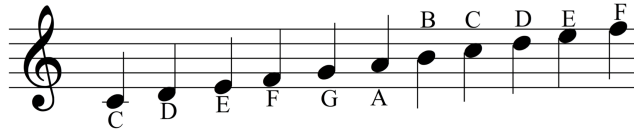
SPOILER ALERT!

Please turn this tip sheet over and try to solve the puzzles without it first.

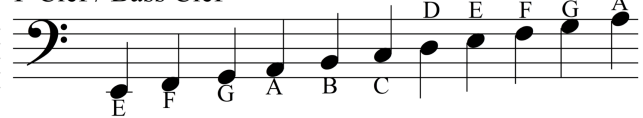
If you have at least one person on your team with some basic music experience, then you should be able to solve the puzzles without this tip sheet.

Note Reading – A musical staff can have a note on a line or space. Note names go from A to G up the staff and repeat. The G (Treble) clef points to G as the second line up, and the F (Bass) clef points to F as the second line down.

G Clef / Treble Clef



F Clef / Bass Clef



Tie - Connects notes with the same letter name

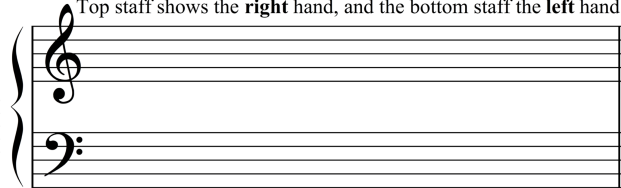


Slur - Connects notes with different letter names



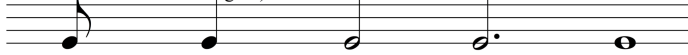
Grand Staff - Used for piano music.

Top staff shows the **right** hand, and the bottom staff the **left** hand.

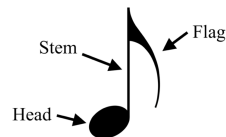


Note values - How long a note lasts, expressed in beats.

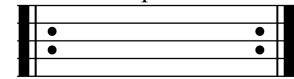
Eighth note - half a beat (very short)	Quarter note - 1 beat (twice as long as an eighth)	Half note - 2 beats	Dotted Half - 3 beats	Whole note - 4 beats
---	--	-------------------------------	---------------------------------	--------------------------------



Anatomy of a Note



Repeat



Play what is between these symbols again.

Solfège - That singing thing like in The Sound of Music.

