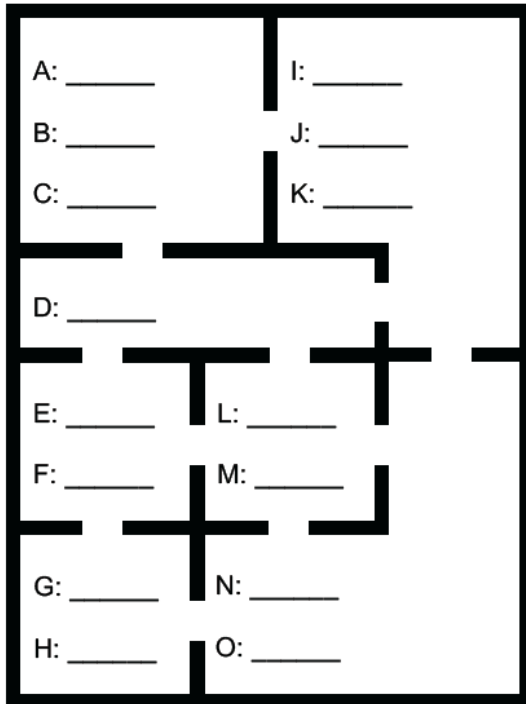


Danger-Prone Daphne did it again!



Each blank needs a six-letter word. Nine of the words have common elements. The other six words, they have common elements, too. Once that's discovered, then dash along the path to connect the dots.



- A. Give to charity
- B. Connects muscle to bone
- C. Camera stand
- D. Ran quickly 100m
- E. Small red root vegetable
- F. Pastry of Denmark
- G. Tiny apartment
- H. Fate of some potatoes
- I. M.D. or PhD
- J. Opposite of youngest
- K. Mythical multi-headed beasts
- L. Museum guide
- M. Tasty tori
- N. Ladybug food
- O. Covered in solid circles

