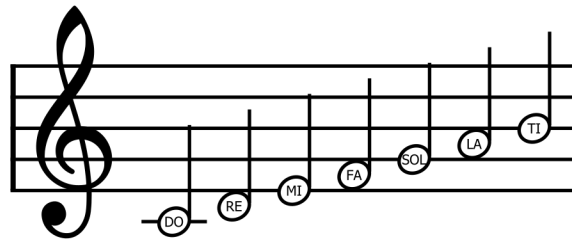


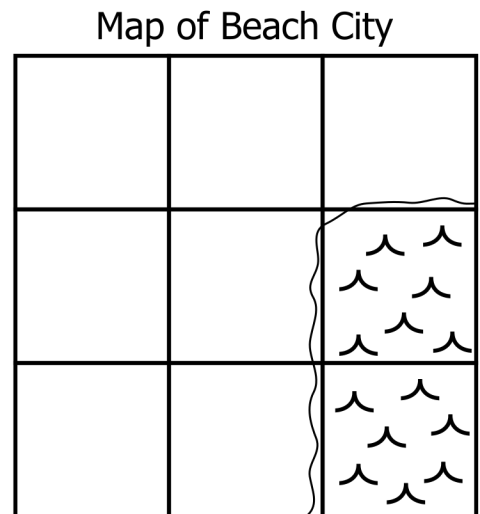


# STEVEN'S MUSICAL ADVENTURES

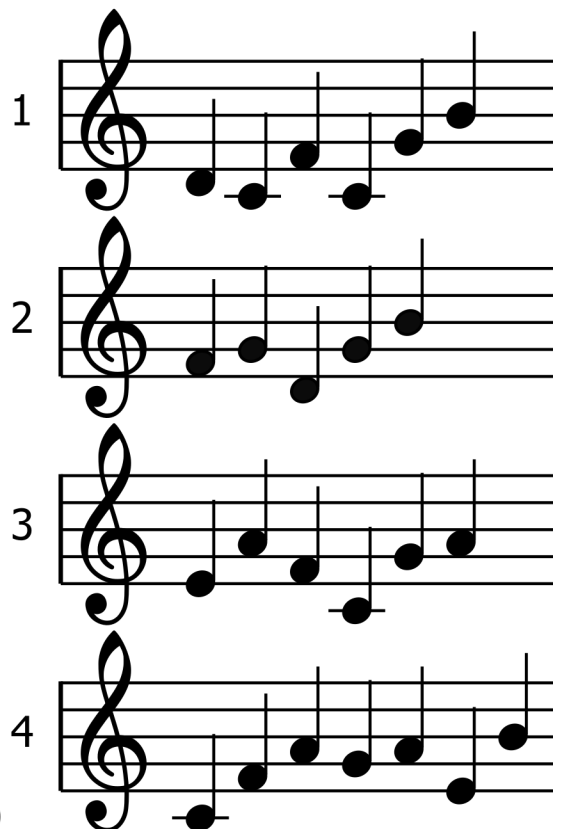


Steven enjoys singing songs while helping everyone in his hometown of Beach City. Fill the seven empty regions of this map with the seven locations he visited this week, based on the following clues:

- Fish Stew Pizza (where fish can be your SOLE topping!) is not in the top row of the map.
- The Big Donut (where Steven buys his daily DONUT) isn't adjacent to either of the two Funland locations.
- The Residential District (home to Steven's friends Onion, Sadie, and LARS) is located exactly between the Funland Amusement Park (which has a hall of MIRRORS) and "It's A Wash" Car Wash (where Steven's FATHER Greg works).
- The three locations that border the ocean, in some order, are Fish Stew Pizza, the Funland Arcade (where various TIERS of prizes can be won), and the Crystal Temple (where Steven lives and acts like a REGULAR kid).



For each of his four adventures this week, Steven made up a new song that allows him to retrace his steps through everywhere he visited.



Steven's answer: \_ \_ \_ \_