

# Bad Wolf

Rose Tyler's message "BAD WOLF" has repeated itself and is showing up seemingly everywhere. As the T.A.R.D.I.S. races past the Pleiades, bringing the Doctor to Earth, he watches the seas, continents, and wonders of the world come into view. He knows he will need to find the patterns in the message if he is to discover the location at which he must finally end.

Babies are not dunked in this denomination, only adults

Big, furry, four-legged beasts roaming in New York State, perhaps

Along with its altitude, this measurement will locate an object's position in the sky

An additional thing of the same type, please

Doctors often do this to have their notes entered without typing

Drivers use these to bypass roadwork

We are four days from it

Woolworth's wasn't the first chain store – this British company was

Official city where many people find the Magic (and the Magic Kingdom)

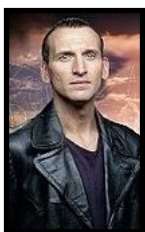
Olive green leaves and purple flowers distinguish this perennial from marjoram

Lacking many words — usually a terse, biting retort

Large flyers choose exit rows for this

First to the finish in the 100 meters is usually known by this superlative

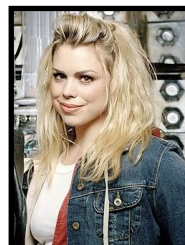
Flying disc once known as a Pluto Platter



**Ninth Doctor (Christopher Eccleston, 2005)**  
This more gritty and grounded Doctor died of cellular degeneration due to overexposure to time vortex energy.



**Tenth Doctor (David Tennant, 2005-2010)**  
After refusing to die once, after being shot by a Dalek, and simply using up a regeneration, it was intentional exposure to radiation in order to save Wilfred Mott that killed this Doctor.



**Companion  
Rose Tyler  
Bad Wolf**



**Companion  
Captain Jack Harkness**  
Con man from the 51st century, WWII soldier, Immortal.



**Companion  
Martha Jones**  
Medical Student, served with U.N.I.T. and Torchwood

Puzzle by Matt S. (Austin, TX)