



AUGUST 2021

Answer Sheet

Welcome to Puzzled Pint!

Tonight

- We're here to help! This is not a competitive event. Ask the Game Control volunteers (GC) for hints as often as you'd like. The goal is to have fun, not to be frustrated!
- **If your location is running virtual**, go to the location page (linked on puzzle download page) and find out how to contact your local GC.
- **If you are collaborating online with your teammates (or have no printer)**: There is a Google Sheet this month! Download and make your own copy to collaborate online together. It can be found on the page where you downloaded the puzzles.

The Puzzles

- Each puzzle will solve to a short word or phrase. How? That's for you to discover.
- Need a code sheet or solving resources? Check out the Resources page on Puzzled Pint's webpage: <http://www.puzzledpint.com/resources/>
- You can use anything to help solve: Use your phone; the internet is fair game! Think your brother might have an insight? Give him a call!
- While each month has a theme, you need no special knowledge of the theme to solve.

About Puzzled Pint

- How did tonight go? Email us at Feedback@puzzledpint.com
- We're an all-volunteer organization.
 - Help us run locally: Talk with Game Control about how you can volunteer.
 - Help us run globally: <https://www.patreon.com/PuzzledPint>

Puzzle Answers	
Interlocking Rings	
Mysterious Runes	
Workin' Hard in Midgard	
Vikings, Vikings, and More Vikings!	
Meta: Loki	

Team Name:

Start Time:

Team Size:

End Time:



MYSTERIOUS RUNES

Hello, archaeology intern! You've arrived at an exciting time: new Viking artifacts have just been unearthed. The artwork on the artifacts appears to depict trade routes between Arabic countries and Viking nations, while the runes seem to be some sort of accounting notation used by Nordic merchants. Our team is working hard to decipher the runes. We have been *reflecting* on them for a while and could use another person to help us.

Below is one rune that we've deciphered, some equations copied from the artifacts, and finally, the answer to the equation at the bottom is what we need. Good luck!

$$\bigcirc\bigcirc\bigcirc = \text{Three}$$

$$\bigcirc\bigcirc + \text{X} = \begin{array}{|c|c|} \hline \bigcirc & \bigcirc \\ \hline \bigcirc & \bigcirc \\ \hline \end{array}$$

$$\text{K} + \bigcirc\bigcirc\bigcirc = \text{X}$$

$$\text{K} + \text{Z} = \text{H}\bigcirc\bigcirc\text{H}$$

$$\bigcirc\bigcirc + \text{C} = \begin{array}{|c|c|c|c|} \hline \bigcirc & \bigcirc & \bigcirc & \bigcirc \\ \hline \bigcirc & \bigcirc & \bigcirc & \bigcirc \\ \hline \end{array}$$

$$\begin{array}{|c|c|} \hline \bigcirc & \bigcirc \\ \hline \bigcirc & \bigcirc \\ \hline \end{array} + \text{Z} = ?$$



WORKIN' HARD in MIDGARD

It is now peacetime, which means... time to get strong for the next battle! I've set up a 5 by 5 grid of workout tasks in my yard. On Mani's day (Monday) through Frigg's day (Friday), I will take a differently-shaped* path. I will start and end with a hard task (the large dots) and will do only easy tasks (the small dots) in between. I will do each task exactly once during my 5-day workout week and I will do the same number of tasks each day. I will only move orthogonally, not diagonally. I will do each task that I encounter, i.e. if I arrive at a dot then I will do that task.

*Rotations of a shape do not count as being differently-shaped.

· O • M • T • H •
· A • E • D • R •
· E • O • O • F •
• M • E • T • A •
• N • L • E • S •

If I keep up with my workout routine week after week, maybe one day I will be as strong as if I were _____ .



VIKINGS, VIKINGS, AND MORE VIKINGS!

We need a crew of exactly five people for our upcoming raid. In rank order of top-ranked to bottom-ranked, the crew is: a helmsman, a skipper, a holuenn, a journeyman cook, and a bard. We'll be sailing under the mighty flag of VVV (Vikings, Vikings, and more Vikings!) with Thor's mighty hammer emblazoned on the side of our ship for good luck. The nine applicants are:

Frans the Fast
Slagvi the Slow
Tarr the Tall
Shevi the Short
Lars the Loud

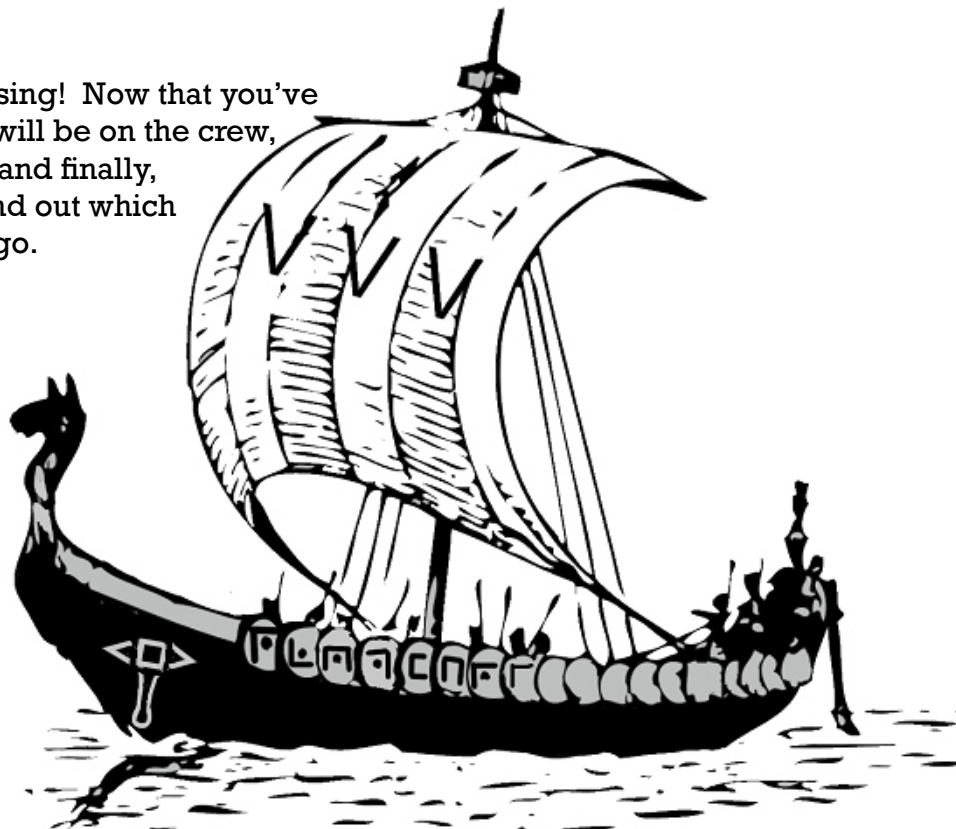
Quig the Quiet
Smidr the Smelly
Haddr the Hairy
Petronilla the Pale

Use the rules below to figure out which five of the applicants will be on the crew:

1. No crew member's name starts with the same letter as another crew member's name.
2. In his youth, Lars was Haddr's and Quig's apprentice so neither Haddr nor Quig is willing to now be outranked by Lars.
3. As decorated warriors, Petronilla and Lars know that they get good results by being in charge so they each applied to be only the helmsman or the skipper.
4. Haddr and Quig got into a brawl and refuse to work on a crew together.
5. One copy of the crew manifest is listed in rank order of top-ranked to bottom-ranked, while the other copy is listed alphabetically by name. Only Frans and Smidr maintain the same positions on both lists.

Plot twist: the ship's cargo has gone missing! Now that you've figured out which five of the applicants will be on the crew, eliminate them as suspects on the boat, and finally, unscramble the remaining 9 letters to find out which animals have been eating the ship's cargo.

Answer:





META: LOKI THE CHANGELING

Loki, that changeling trickster! He has worked his magic such that each clue to the left of the arrow yields a word that is one letter different than a word (the clue to the right of the arrow) that fits the category. The categories are your main set answers (though they are not in the same order that the puzzles were in).

Category: _____

archaic form of "you" → a type of plant (4)

enemy → a type of animal (3)

nearby or encircling → the soil (6)

cooking in a greasy pan → a mode of transportation (6)

Category: _____

stays → anatomical parts (7)

decrypt → an amount of time (6)

wordplays → items used in bowling (4)

performs an action → anatomical parts (4)

Category: _____

disaccharide made of two linked glucose units → from Malta (7)

sharp → a helpful hint (7)

ham source → a type of nose (3)

pasta piece → a type of skirt popular in the USA in the 1950's (6)

Category: _____

stronghold sometimes made of pillows → split into two parts (4)

a light stroke of the hand, or a piece of butter → a cooking vessel for soup (3)

a type of beer → a weapon (3)

the most important chess piece → a circular band (4)

What do we expect to do as we sit down to have our family reunion dinner of Viking gods?

Answer: _____

©2021 CC BY-NC-SA Intl. 4.0 Cynthia H. (Philadelphia, PA)



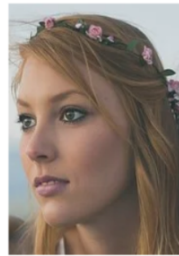
Scan code to give
feedback on the
puzzles!



NORSE CODE

Those pesky mortals; they are so untrustworthy that we have to encode everything we say! Figure out what each question mark represents in order to reveal something that should be on every Viking ship.

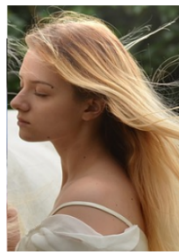
$$\begin{aligned} E + E &= P \\ I + P &= Y \end{aligned}$$



Frigg

$$H + D = ?$$

$$\begin{aligned} T + T &= M \\ D + E &= B \end{aligned}$$



Freya

$$M + T = ?$$

$$\begin{aligned} S + E &= Q \\ A + J &= G \end{aligned}$$



Odin

$$K + I = ?$$

$$\begin{aligned} A + G &= D \\ C + I &= F \end{aligned}$$



Thor

$$A + I = ?$$